

Huntley Executive Center



12151 Regency Square Parkway, Huntley, IL

Office Space Available

New market opportunities:

We are seeking qualified tenants who are interested in establishing a presence in the newly renovated Huntley Executive Center. The selected practices will have the opportunity to be part of a dynamic, growing and exciting new market in a high-end facility.

Existing tenants include:

- Cardiovascular
- Chiropractor
- Dentist
- Lab services
- Medical Consultation
- Financial Planning Services
- Engineering

For Leasing Information:

Justin Dickinson at (847) 922-1358

www.HuntleyExecutiveCenter.com

Building Highlights:

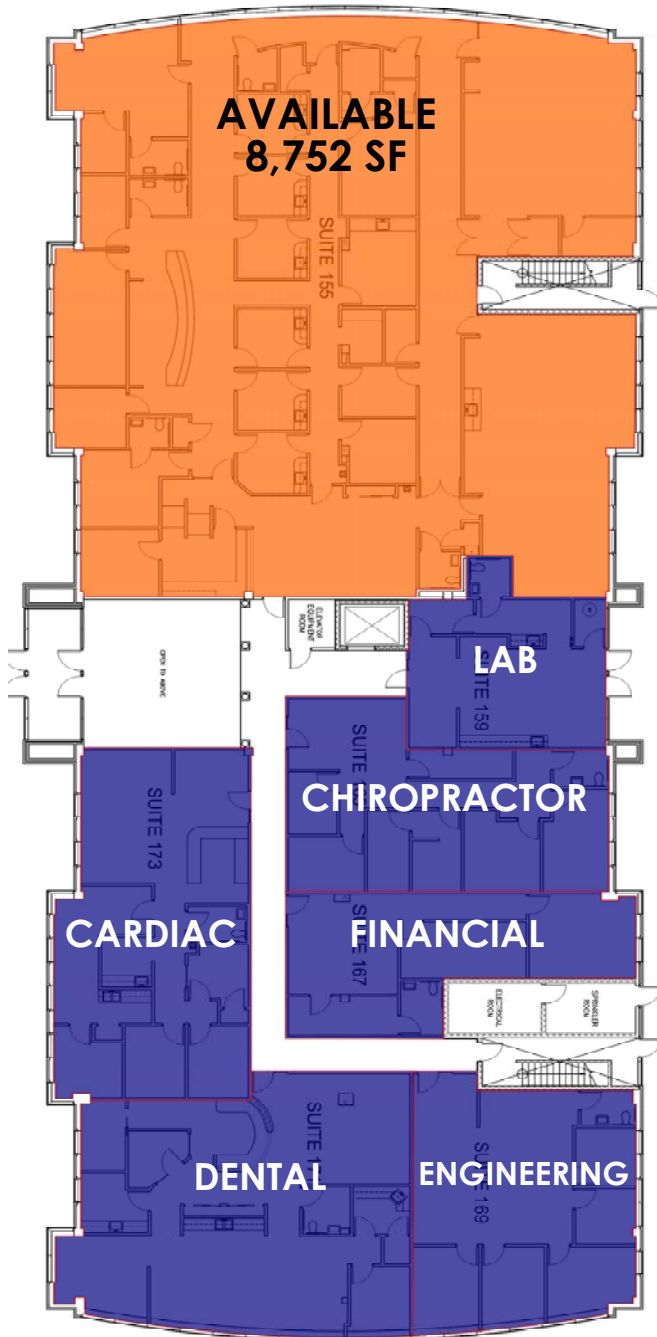
- 35,000 SF
- 2-stories
- Close proximity to the largest senior living community in country
- Many new improvements to building
- Competitive lease rates

JANKO | GROUP

Huntley Executive Center

Floor Plans

First Floor



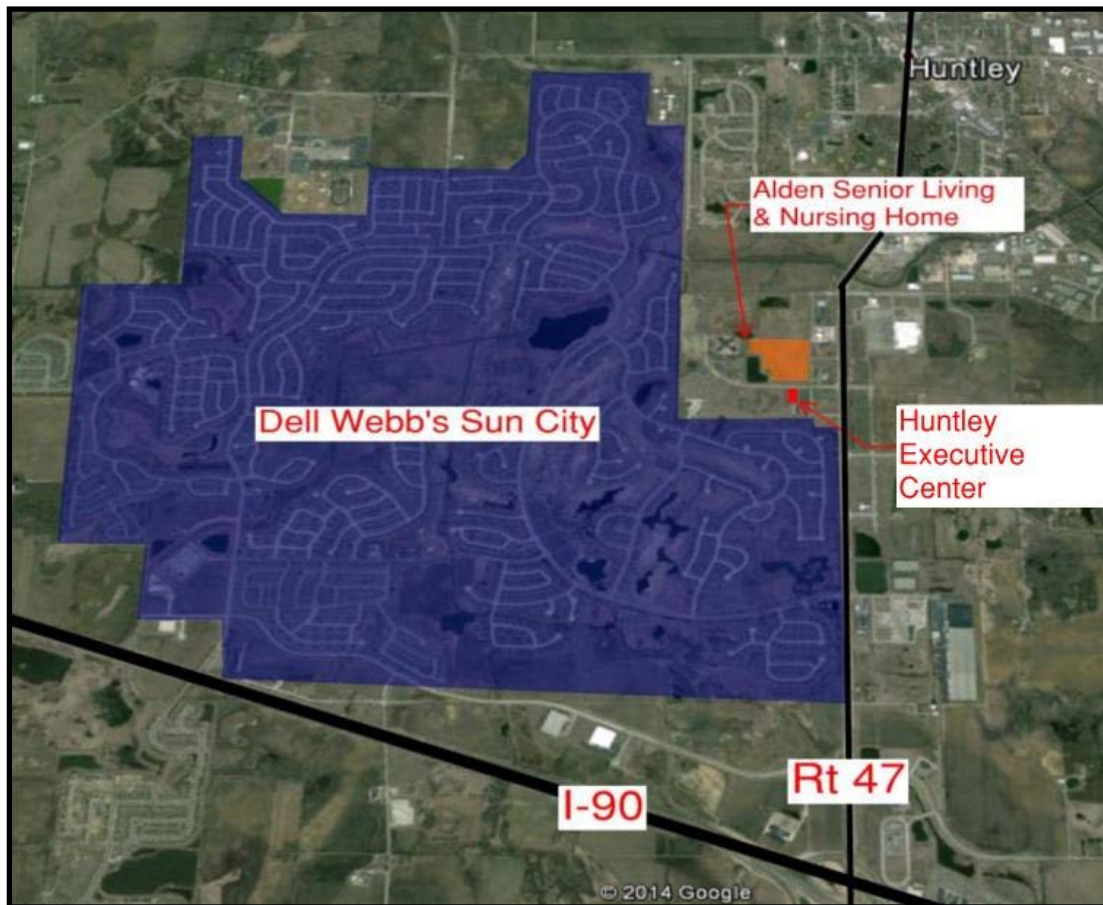
Second Floor



For Leasing Information:
Justin Dickinson at (847) 922-1358
www.HuntleyExecutiveCenter.com

JANKO | GROUP

Huntley Executive Center Captured Demographic



- Adjacent to Dell Webb's Sun City Huntley - the largest, highest amenity 55+ community in the Midwest with 5,400 homes on 2,300 acres
- Golf cart access from Sun City
- Attractive two-story glass atrium and high-end finishes
- Customize your suite based on your specific needs
- Low Kane County real estate taxes
- Tenant ownership opportunities

Accessible. Growth. Opportunity.

For Leasing Information:

Justin Dickinson at (847) 922-1358

www.HuntleyExecutiveCenter.com

JANKO | GROUP

Huntley Executive Center

Office Space for Lease

Building Information:

Address	12151 Regency Square Parkway Huntley, IL 60142
Total Sq. Footage	35,000 SF
Total Available Sq. Footage	20,819 SF
Largest Space Available	8,752 SF
Smallest Space Available	1,373 SF
*Available spaces are able to be combined or devised	
Number of Floors	2
Parking	219 spaces (6.2/1000sf)
Building Age	Built in 2001

Lease Terms:

Lease Term	3-10 years, NNN
2014 Operating Cost Estimate	\$6.95/SF
TI Allowance/RSF	Negotiable

Amenities:

- Close proximity to captured demographic
- Newly renovated exterior and common areas

Tenants include:

Cardiovascular	Medical Consultation
Chiropractor	Financial Planning Services
Dentist	Engineering
Lab services	

For Leasing Information:

Justin Dickinson at (847) 922-1358

www.HuntleyExecutiveCenter.com

JANKO | GROUP