

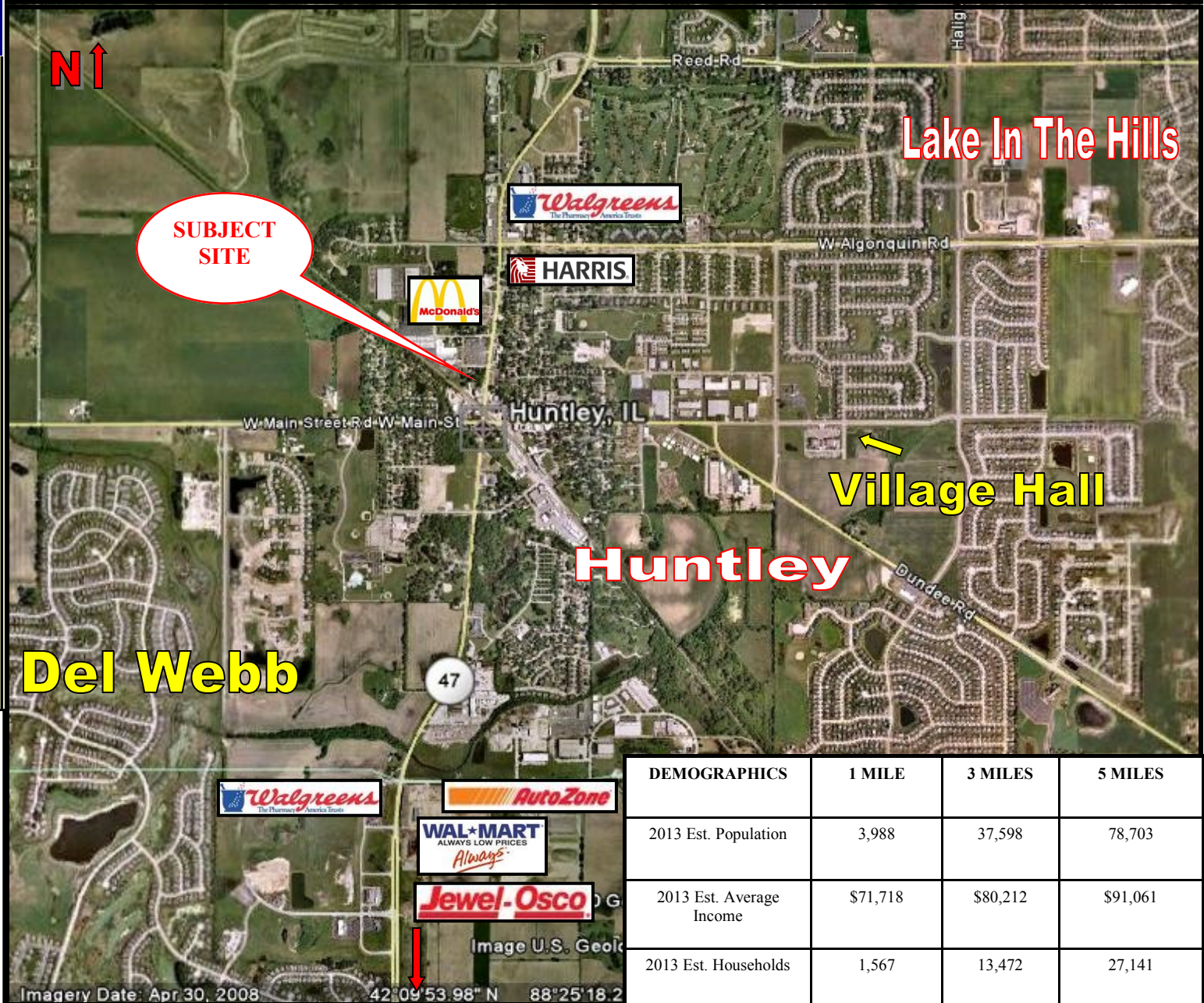
HIGHWAY FRONTAGE

- ◆ ASKING PRICE- \$400,000
- ◆ 210' FRONTAGE ALONG ROUTE 47
- ◆ UTILITIES STUBBED TO SITE
- ◆ DOWNTOWN BUSINESS DISTRICT
- ◆ EXCELLENT EXPOSURE
- ◆ ZONED B3
- ◆ 22,000 VPD- ROUTE 47
- ◆ IDEAL FOR FAST FOOD, RETAIL, OFFICE

BLUE CHIP COMMERCIAL REAL ESTATE PRESENTS

'AVAILABLE 1.3 ACRE OUTLOT'

11011 ROUTE 47
HUNTLEY, IL

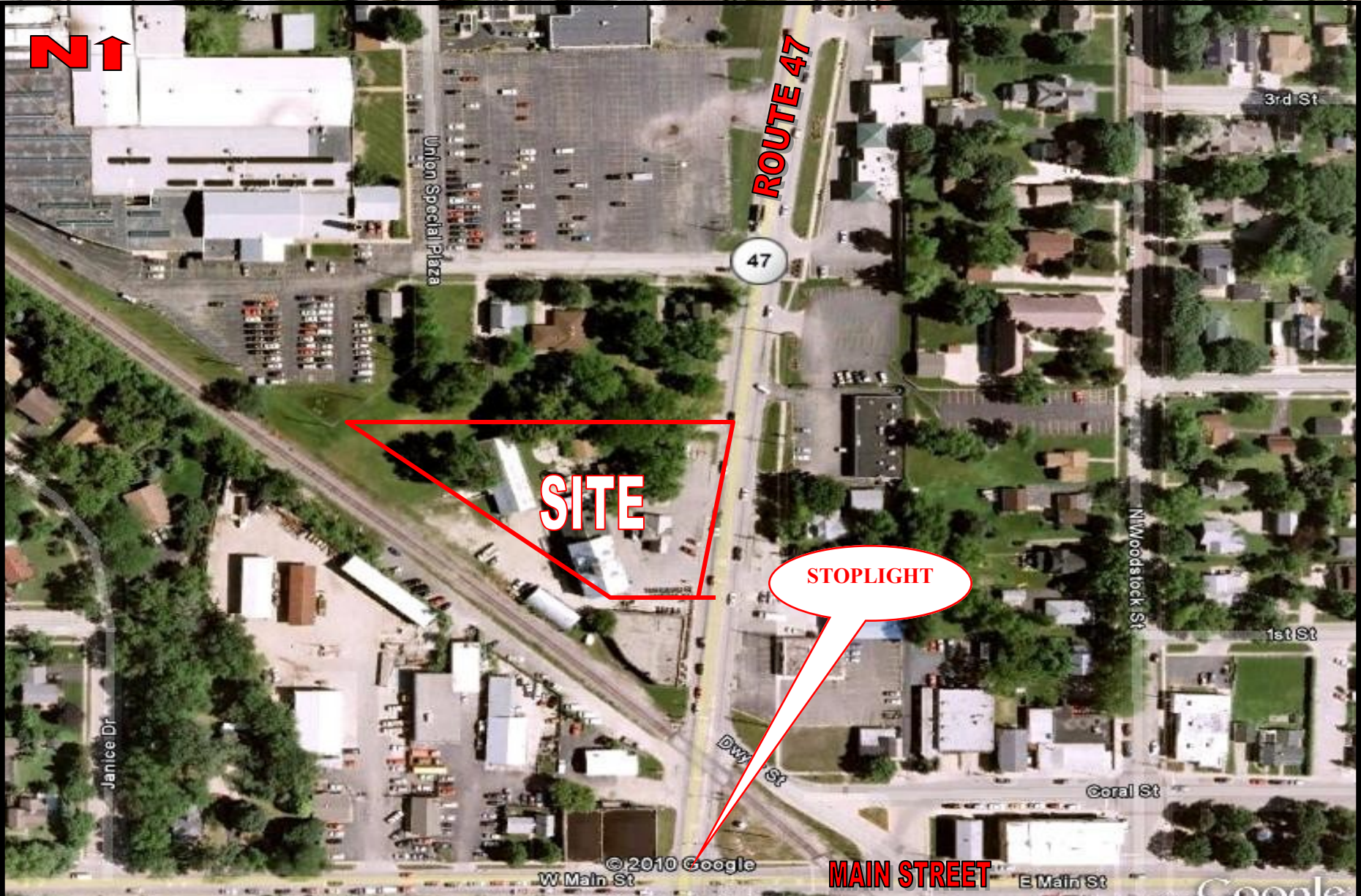


DEMOGRAPHICS	1 MILE	3 MILES	5 MILES
2013 Est. Population	3,988	37,598	78,703
2013 Est. Average Income	\$71,718	\$80,212	\$91,061
2013 Est. Households	1,567	13,472	27,141



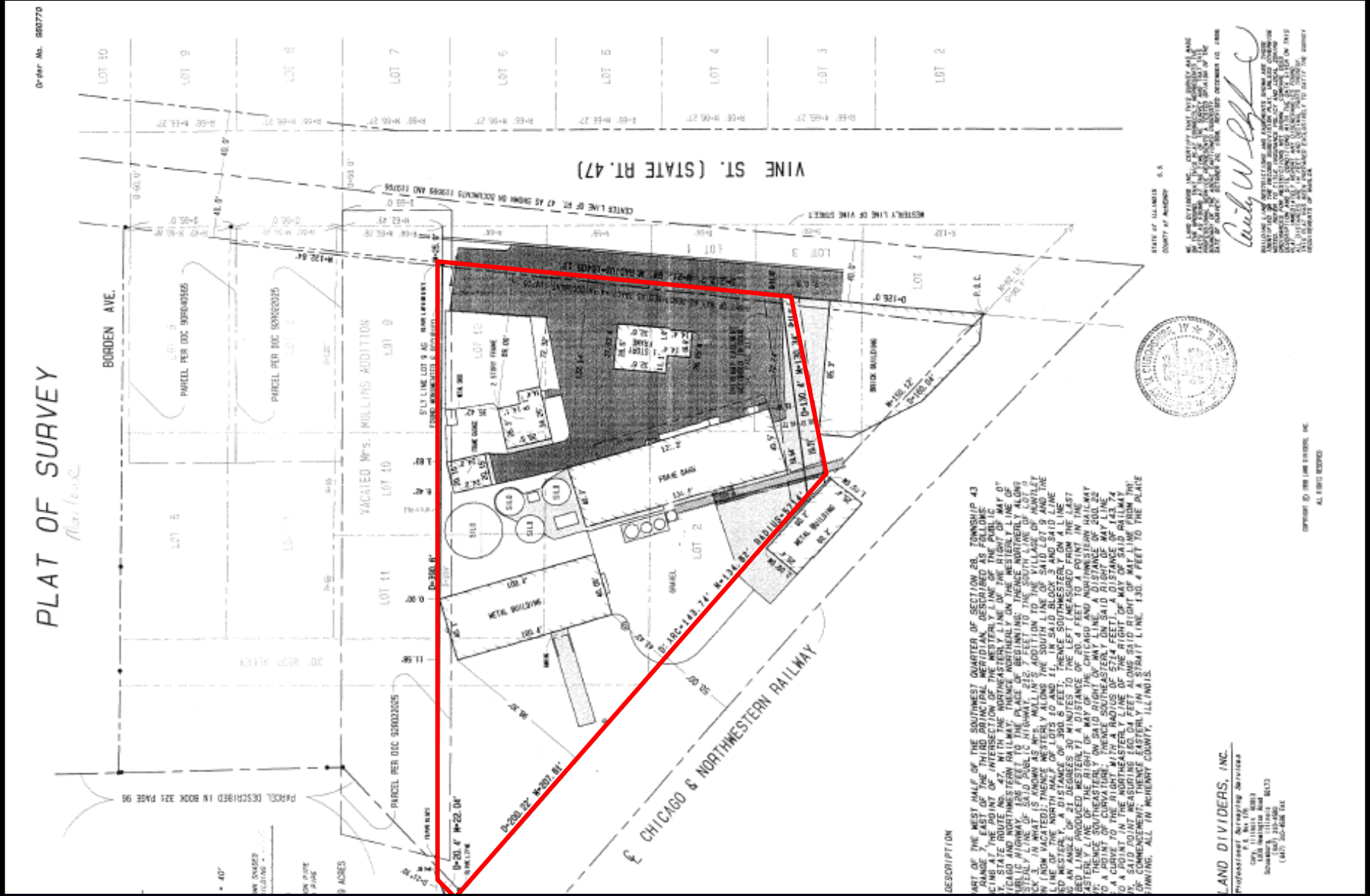
Tim Billimack
Managing Broker
 1410 Lake Avenue
 Village of Lakewood, IL
 815-355-0196
 billimackt@gmail.com

1011 ROUTE 47, HUNTLEY



11011 ROUTE 47, HUNTLEY

SURVEY



Disclaimer: Blue Chip Commercial Real Estate, LLC is the owner's designated agent and makes no warranties or representations as to the accuracy or completeness of this information contained herein. The information has been obtained through sources deemed reliable; however, it is up to the purchaser to conduct due diligence prior to sale or lease.